

Thank you for your choice of the Bachmann Branchline Webb G2A 0-8-0 locomotive.

Running in

The mechanism of this model requires running in (without a load) for approximately 1 hour in each direction at moderate speed.

Curves

Bachmann Branchline locomotives are not suitable for use on track tighter than second radius (approx. 18 inches / 450 mm).

Body removal

Locomotive remove the two screws at front and rear of the chassis as indicated on the diagram

Tender remove the two screws at the rear of the tender

DCC Decoder fitting to non DCC fitted loco

This model has an 21-pin mtc connector in the tender for a decoder with an matching fitting (eg Bachmann 36-554). To use a decoder with an 8-pin harness use an 8 / 21-pin adaptor (item 36-559).

We recommend that the running in as above be carried out using a DC power supply before moving on to fit a DCC decoder.

Sound decoder fitting

The model has space in the tender to accept a loudspeaker. Connect the speaker supplied with the decoder to the SP+ and SP- connections on the tender PCB. Follow any instructions supplied with the decoder.

Lubrication

When required, sparingly lubricate the motor bearings using plastic compatible light oil and the gear train with model grease.

Tender drawbar length adjustment

The model has a variable length drawbar set by the position of the sliding pin under the tender. Slacken the screw a quarter turn, adjust length and retighten.

Add-on detail parts.

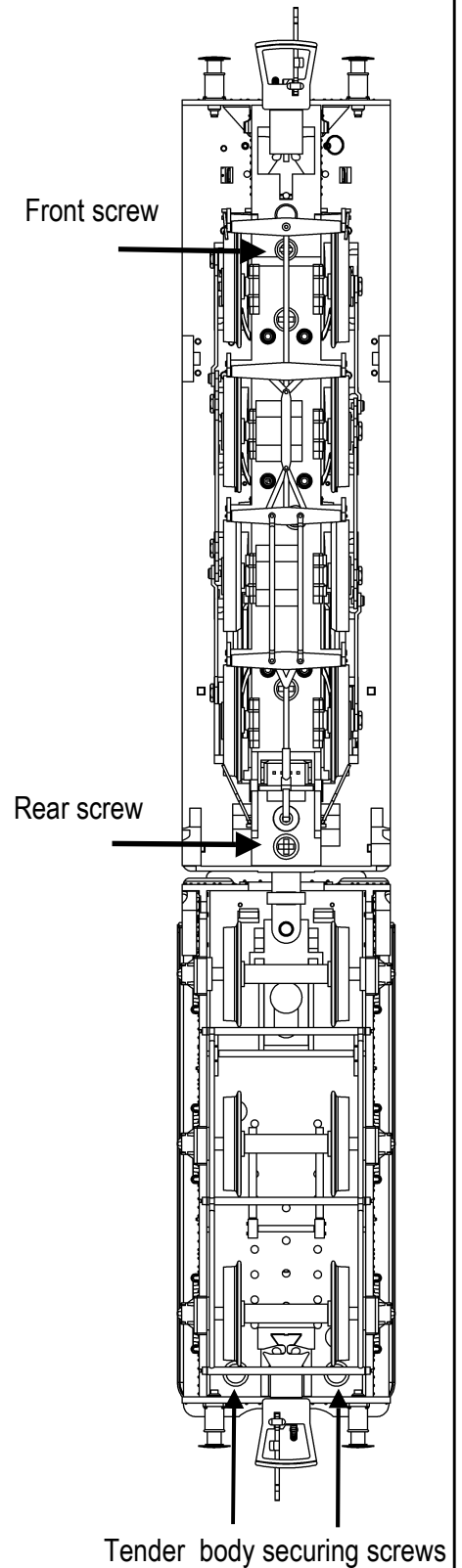
The vacuum pipes fit to the front and rear buffer beam and the guard irons to the front of the frames as shown.

Replacement parts

When ordering parts please quote the catalogue number together with the livery of the model (if appropriate) and number of the part required.

Parts are subject to availability.

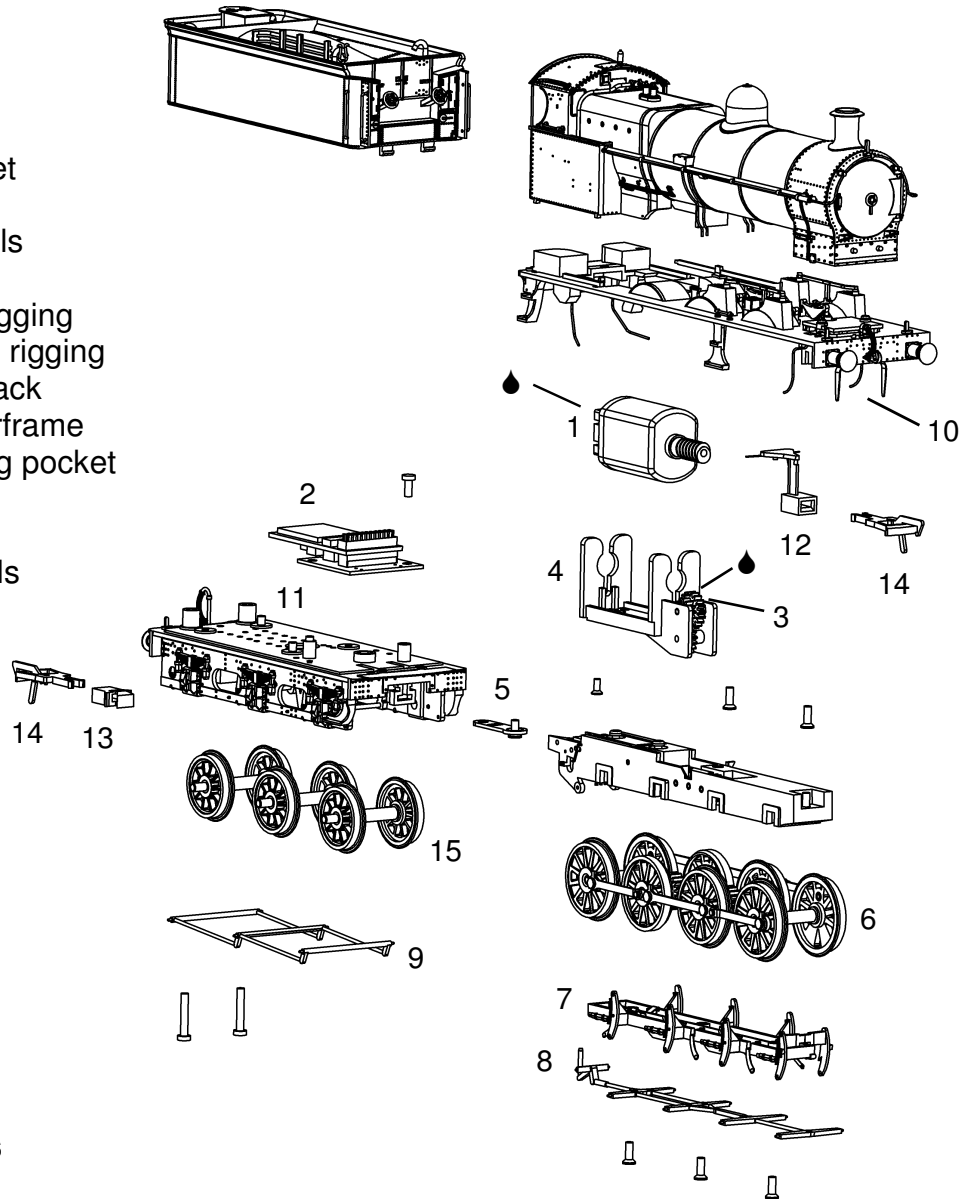
Packets of couplers (item 36-030) and buffers (item 36-032) suitable for this model are available from retailers.



Parts

- 1 475-106 motor
- 2 025-034 circuit board
- 3 475-102 gears
- 4 475-104 motor bracket
- 5 475-105 drawbar
- 6 475-103 driving wheels
- 7 475-107 baseplate
- 8 475-121 loco brake rigging
- 9 475-122 tender brake rigging
- 10 475-123 accessory pack
- 11 475-124 tender underframe
- 12 475-108 front coupling pocket
- 13 BL2006 NEM pocket
- 14 BL1999 coupling
- 15 475-125 tender wheels

(DCC Onboard variant shown)



The model should be handled carefully as it has many finely detailed parts. It is not suitable for persons under 14 years.

The engine and tender are permanently coupled with wires between - please take care to ensure that neither is allowed to dangle from the other

Bachmann Europe Plc

Moat Way, Barwell, Leicestershire,
LE9 8EY

01455 841756

www.bachmann.co.uk

G2A rev 1 05/08

E4175-IS001

Fitting of vacuum pipes and guard irons

